



2023 INSTALLER APPLICATION GUIDE

Professional Coatings | Application Tools & Accessories | Concrete Repair | Training

The items listed in this showcase catalog only represent a portion of our inventory, ask us for any additional items you may be interested in. Colour charts displayed are represented as closely as possible, however variations should be expected due to differences in print material, substrate condition, thickness of application, speed of curing, blending of colours, application method, and primer coat tint. Some items require special order, ask your sales representative for additional information.



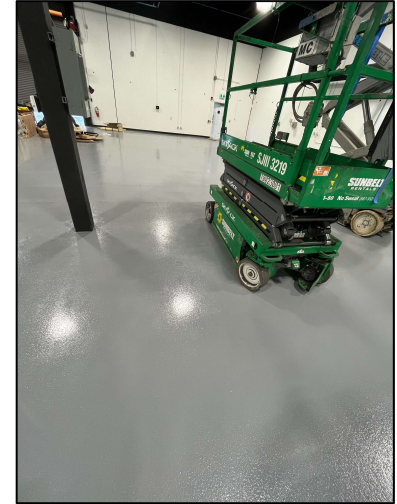
PRODUCTS INDEX

100% Solids Epoxy	4-5	Paint Trays	36
Abrasives	32	Poly Colour Tint Pods	11
Cementitious Polyurethanes	8	Polyaspartic Polyurea	6
Covebase Kits	9	Quartz Color Granules	21
Concrete Restoration	27-28	Roller Frames and Cages	38
Direct to Metal	24-25	Roller Sleeve Refills	37
Drill Mixers	35	Sealer	29
Ends Caps for Roller Sleeves	38	Solid and Safety Colour Pigment	11-13
Epoxy Crack Fillers	7	Solvents	10
Extension Poles	38	SpeedSqueegee	33
Fan Decks	40	Spike Shoes	39
Fast Cure Epoxy	5	Squeegee Trowels	37
FLAKE Signature Blends	19-20	Tint Pods	11-17
Floor Scrapers	34	Thickening Agent	10
GlitterFlakes	22	Throw-away Brushes	36
Helix Mixers	35	Tray Liners	36
Magic Trowels	37	Trowels	34
Marketing Materials	40	UV Stable Polyurea	6
Metallic Liquid Colour Pods	14-15	Vapour Barrier	10
Metallic Powder Pigment	16-17	Water-based Epoxy	6
MICA Natural Flakes	22	Water-based Urethanes	6
MicroConcrete	26	Waterproofing Flexible Membranes	7
Mixing Measuring Cups / Buckets	35		
Moisture Vapour Barriers	10		

Passeport ELITE Industrial Coatings



Our series of industrial products from Passeport Elite represent great solutions for repairing cracks and maintaining the integrity of different types of surfaces and coatings to provide an exceptional appearance and outstanding durability.



FLOOR COATINGS AND REPAIR	
Item #	Description
PE700229	Epoxy Crack Filler 3L – FAST CURE
PE700230	Epoxy Crack Filler 3L
PE700231	100% Solids Epoxy (3.0 Gal kit) – CLEAR
PE700232	100% Solids Epoxy (3.0 Gal kit) – GREY
PE700234	Polyaspartic 80% UV Stable (2.0 Gal kit)

100% Solids Epoxy

Passeport Elite Industrial Epoxy is a two component self-leveling epoxy coating that is 100% solid. With its opaque color and glossy finish, it can be used to restore floors or protect new floors. It provides excellent physical and chemical resistance providing durability while maintaining its artistic taste. This system can be used with a primer coating, followed by 2 topping coats.



Epoxy-Based Crack Filler

A two-component 100% solid epoxy paste designed to repair vertical and horizontal cracks. It has excellent adhesion with different types of surfaces such as concrete, masonry, wood, metal and plastics.

UNIVERSAL LIQUID STANDARD COLOURANT (1.0L)	
Item #	Description
PE700236	Medium Grey 663
PE700237	Shady Grey 305
PE700238	Super White 433
PE700239	Black 459
PE700240	Beige 431
PE700241	Light Grey 885

EPOXY LIQUID METALLIC COLOURANT (1.0L)	
Item #	Description
PE700242	Silver Metallic 101
PE700243	Charcoal Metallic 124
PE700244	Mocha Metallic 128
PE700245	Hot Chocolate Metallic 148



We stock a wide variety of colours that are compatible with epoxy and polyaspartic coatings.



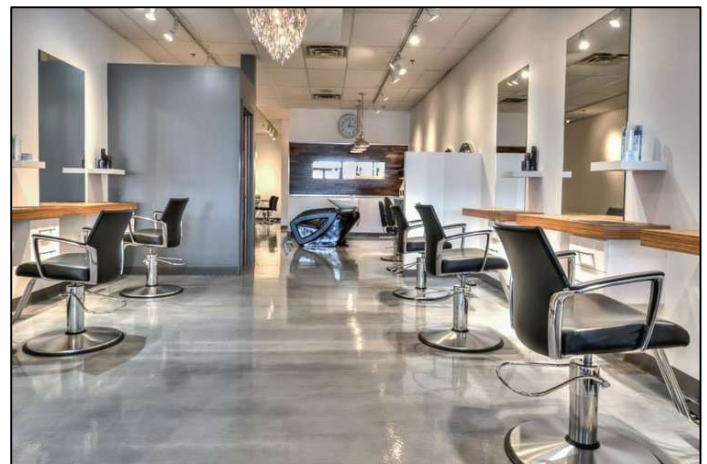
UNE MARQUE SIKA
A SIKA BRAND

100% Solids Epoxy

ECTR is a 100% solid, two component self-leveling epoxy coating. It provides excellent resistance to abrasion and chemical resistance. ECTR meets all kinds of requirements such as durability, performance as well as aesthetics. This system has been approved by the Canadian Food Inspection Agency (CFIA). Can be tinted with solid & metallic colour.



100% SOLIDS EPOXY (3.0 Gal kit)	
Item #	Description
ECTR-CLEAR	Clear
*ECTR-5GAL-CLR	Clear (15.0 Gal kit)
ECTR-305	CTM Grey
ECTR-885	Light Grey
ECTR-FC	Fast Cure – Clear
ECTR-SFC	Super Fast Cure – Clear

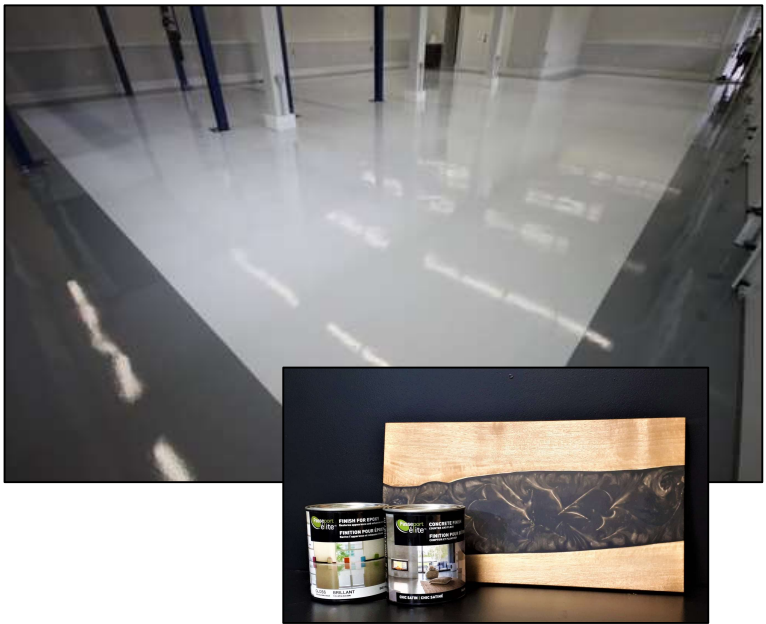


Floor Coating Products



Polyaspartic

A two-component high solids polyaspartic coating system designed to restore and protect floors such as concrete, wood, metal etc. It has excellent UV stability, physical and chemical resistance as well as aesthetic appearance.



Water-based Coatings

Water-based epoxy is designed for concrete floors and walls. It can be used as a primer or topcoat on concrete, wood, and other materials. Polyurethane is designed according to specific properties required for concrete floors and walls.



UV STABLE	
Item #	Description
UCTR-4950	Polyurea Topcoat (1.0 Gal kit)
PACT-8000	83% Polyaspartic Polyurea (2.0 Gal kit)
PE700234	80% Solids Polyaspartic (2.0 Gal kit)
50032	TF80 Slow Poly (5.0 Gal kit)
500300	TF80 Super Slow Poly (5.0 Gal kit)
5004A	TF80 Fast Poly (5.0 Gal kit)
5004CD	TF90 Slow Poly (5.0 Gal kit)

WATER-BASED COATINGS	
Item #	Description
WECTR/GF	WB Epoxy – Clear (3.0 Gal kit)
WUCTR-G	WB Polyurethane – Gloss (1.0 Gal kit)
WUCTR-S	WB Polyurethane – Satin (1.0 Gal kit)
PE70059_	Finish for Epoxy Polyurethane (946ml or 3.78L)



SPECIALTY EPOXY KITS (4.2 Gal Kit)	
Item #	Description
ECTM-4.2	Epoxy Waterproofing Flex. Membrane
ECTR-3	Flexible Polyurethane Hybrid Topcoat



Waterproofing Systems

ECTM (flexible membrane epoxy urethane hybrid) is a solvent less, 100% solid, two-component, epoxy polyurethane membrane specifically designed to protect substrates against water infiltration. It exhibits high elongation and a high resistance to tearing. ECTR3 (polyurethane hybrid coating) is a solvent less, two-component, epoxy polyurethane hybrid coating that exhibits excellent appearance and physical properties. It was specifically designed to be used as a wear coat for the ECTM membrane.



UNE MARQUE SIKA
A SIKA BRAND



Epoxy Crack Filler

ECT-CF CLEAR is a two-component crack filler, sag resistant structural epoxy system designed to repair vertical or horizontal cracks. It has excellent adhesion to concrete, masonry, wood, metal and plastics. Ideal for easy cleaning of the wall floor junction. Superior compression force. Can be used on large vertical surfaces. Waterproof and seamless. Dense surface resistant to bacteria and moisture and easy to clean.



EPOXY CRACK FILLER (1.0 Gal Kit)	
Item #	Description
ECT-CF-CLEAR	Regular Cure
ECT-CF	Fast Cure
ECT-CF SFC	Super Fast Cure
UCTCF-5000	Polyurea Super Fast Cure (2.0 Gal)



UNE MARQUE SIKA
A SIKA BRAND

Cementitious Urethane Coatings

WUCT-CSL is a self-leveling, medium to heavy duty, three-components; water dispersed polyurethane-based cement and aggregate screed system. Our urethane cement coating provides resistance against compression, abrasion, impacts and chemicals. WUCT-CSL meets many requirements such as durability, performance, and thermal shock resistance where pressure cleaning at high temperatures is required. This coating offers a choice of anti-slip finish, from very fine to very aggressive, by broadcasting silica sand into the wet coating.

CEMENTITIOUS POLYURETHANE	
Item #	Description
WUCT-CSL	Self-Leveling Poly Cement & Aggregate (4.7 Kg kit)
WUCT-CP	Top-Coat for WUCT-CSL (3.0 Kg kit)



Cove Applications

Allows for interior applications without harmful odors. Impermeable and seamless coves can be shaped using ECTRT. Dense surface resistant to bacteria and moisture and easy to clean. Excellent adhesive properties and may apply several layers on itself with excellent adhesion.

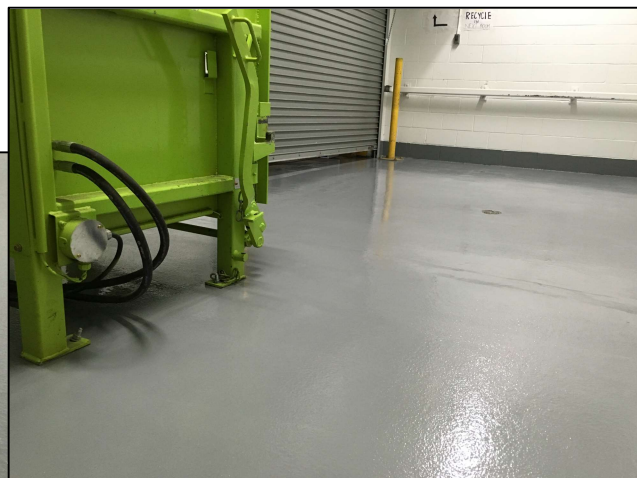
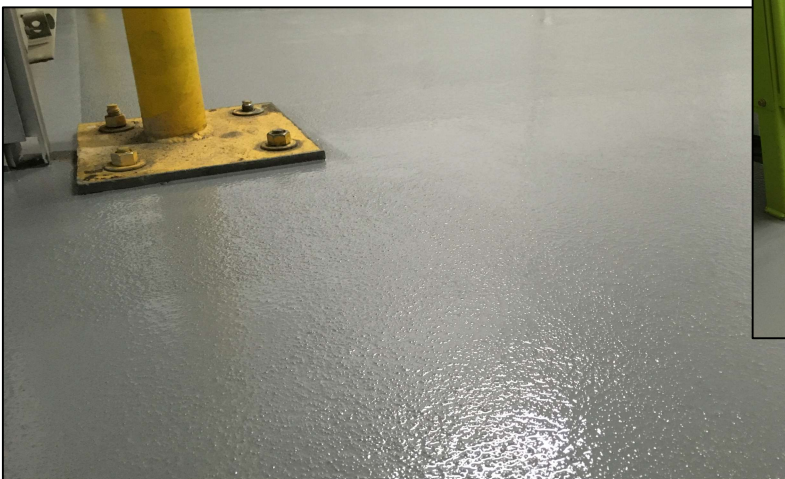


SPECIALTY EPOXY KITS

Item #	Description
ECTR-OP	Epoxy Orange Peel Finish 3.0 Gallon Resin Kit
ECTRT	Epoxy Based Troweled Cove Kit
MAR4269D	6 x 4 3/4" Radius Cove/Base Trowel

Orange Peel Epoxy

ECTR-OP is a solvent-less two component epoxy coating system with an orange peel finish. It has exceptional resistance to abrasion and to numerous aggressive chemical products. It may be applied on concrete, wood, metal and on any previously applied coating that is well bonded to the substrate.





UNE MARQUE SIKA
A SIKA BRAND

Moisture Vapour Barriers

ECTR-MVB moisture vapor barrier is a 100% solid, two component epoxy coating, designed for controlling the moisture vapor emission rate on deteriorated or new floors. ECTR-MVB meets ASTM F3010 product requirements for vapor permeance when applied at a thickness of 18 mils. The coating will control moisture vapor emission rates up to 25 lb. /24 hr. /1000 square feet. ECTR-MVB provides excellent resistance to abrasion and chemical resistance and meets many requirements such as durability, performance as well as aesthetics.

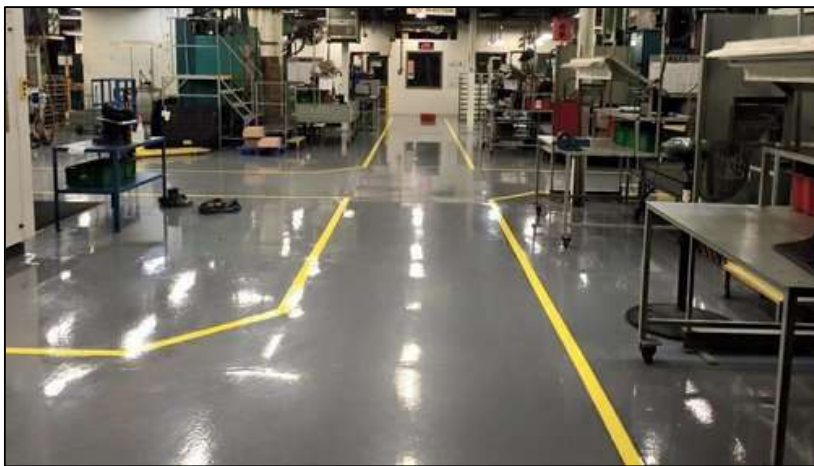
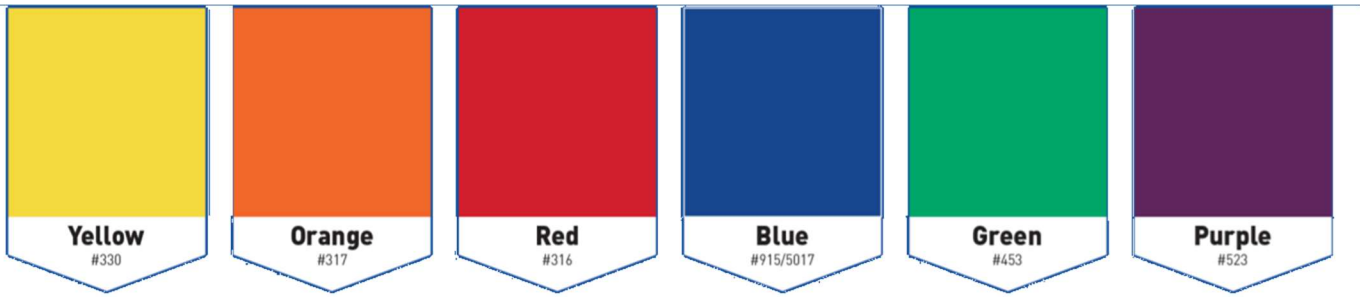
SPECIALTY EPOXY KITS (3.0 Gal Kit)	
Item #	Description
*ECTR-VRM	Vapour Reduction Membrane
ECTR-MVB	Moisture Vapour Barrier
ECTR-MVBFC	Moisture Vapour Barrier – Fast Cure



THIXO-5 is for industrial use only. It's a fluffed and dried synthetic polyethylene pulp used to thicken the consistency of epoxy coatings for use in various applications.

SOLVENTS AND OTHER	
Item #	Description
SCT0003	Acetone (5.0 Gal pail)
SCT0001	Xylene Cleaner (1.0 Gal can)
THIXO-5	Epoxy Thickening Agent (1.0 Kg pail)

Safety Colour Chart



**The colours on this chart are represented as closely as possible. Variations should be expected due to differences in substrate condition, thickness of application, speed of curing, blending of colours, application method, and colour of initial primer coat.

EPOXY LIQUID SAFETY COLOUR TINT PODS (500ml)	
Item #	Description
BASE316	Safety Red
BASE330	Safety Yellow

Polyaspartic Colourant



POLYASPARTIC TINT PODS (500ml)	
Item #	Description
POLYBASE305	CTM Grey
POLYBASE431	Almond
POLYBASE433	White
POLYBASE459	Black

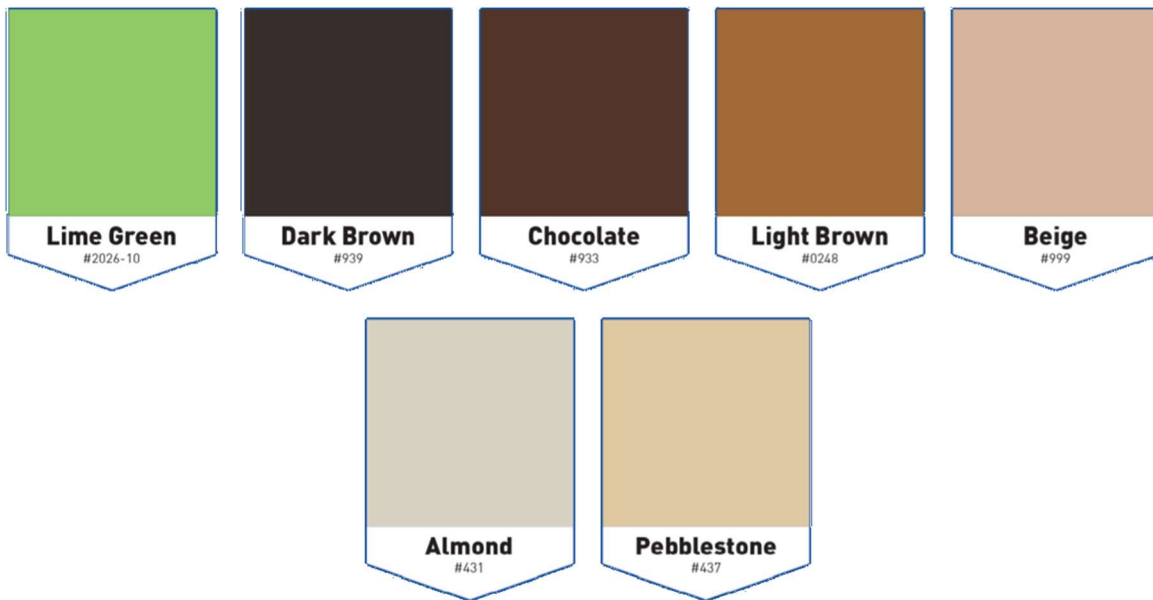


Epoxy Solid Colours (Liquid Pods)

Whatever colour scheme and/or complex design your mind is after, we've got the colours to match! Every colour of the rainbow and more is available to customize your flooring to the fullest extent. Our colour pods are 100% solid, epoxy colour concentrated additives used for pigmenting ECTR systems.

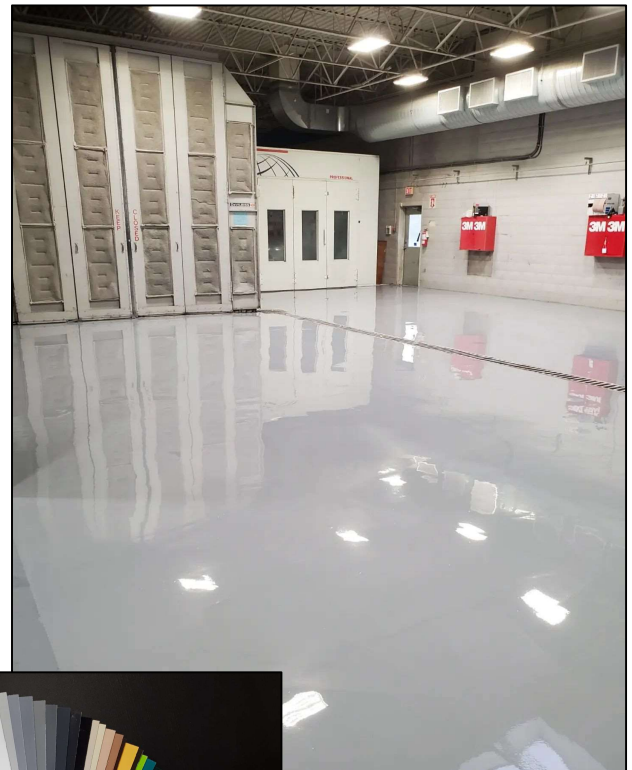


**Some colours require special order, contact your sales representative for further information.



**The colours on this chart are represented as closely as possible. Variations should be expected due to differences in substrate condition, thickness of application, speed of curing, blending of colours, application method, and colour of initial primer coat.

EPOXY LIQUID SOLID COLOUR TINT PODS (500ml)	
Item #	Description
BASE0248	Light Brown
BASE305	CTM Grey
BASE306	Pale Grey
BASE353	Deep Blue
BASE365	Steel Grey
BASE431	Almond
BASE433	Super White
BASE446	Light Green
BASE454	Forest Green
BASE459	Black
BASE517	Aqua
BASE521	Pale Blue
BASE524	Silver
BASE663	Medium Grey
BASE885	Light Grey
BASE933	Chocolate
BASE952	Lime Green
BASE999	Beige



Epoxy Pearlescent Colours (Liquid Pods)



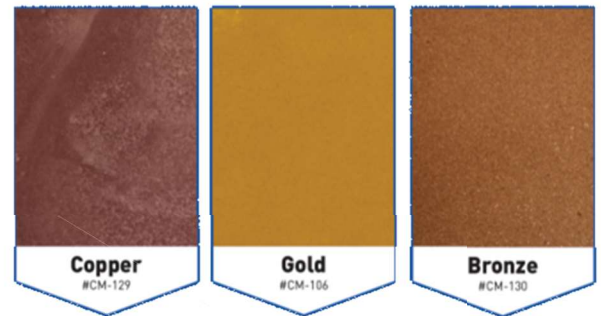
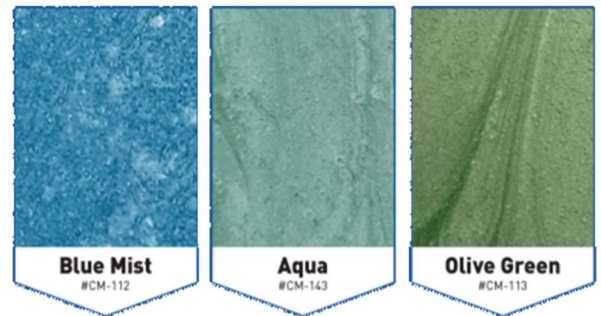
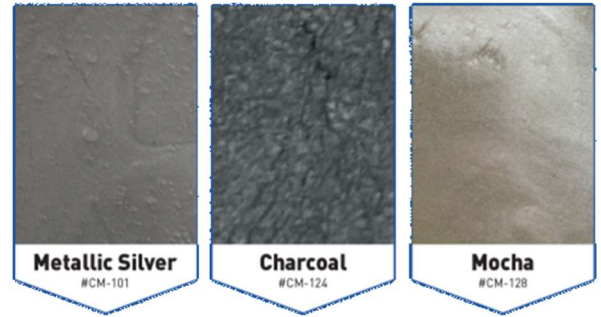
EPOXY LIQUID PEARLESCENT TINT PODS (500ml)	
Item #	Description
BASE149	Ice
BASE152	Antique Gold
BASE153	Bronze Glitter
BASE154	Pearl

**The colours on this chart are represented as closely as possible. Variations should be expected due to differences in substrate condition, thickness of application, speed of curing, blending of colours, application method, and colour of initial primer coat.



Epoxy Metallic Colours (Liquid Pods)

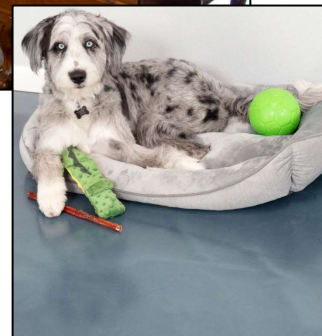
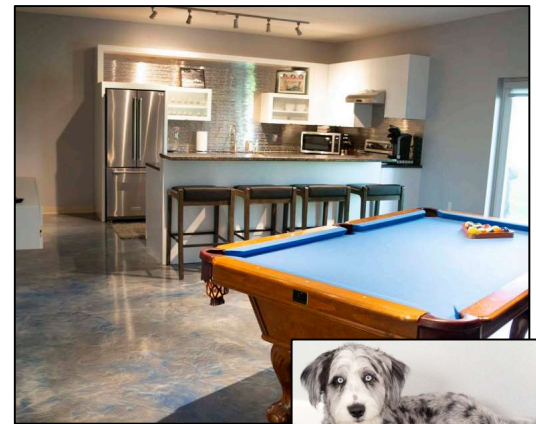
EPOXY LIQUID METALLIC TINT PODS (500ml)	
Item #	Description
BAES101	Silver
BASE106	Samurai Gold
BASE112	Blue Mist
BASE116	Violet Passion
BASE124	Charcoal
BASE128	Mocha
BASE129	Copper
BASE130	Bronze
BASE135	Ruby
BASE143	Aqua
BASE148	Hot Chocolate



Pearlescent Metallic Pigments

Special effect pigment composed of mica nano-particles coated with organic and inorganic pigments to create pearlescent, iridescent, and translucent finishes that mimic the natural look for stone and rock formations. These unique pigments are designed to be field-blended with a clear, high solids resinous floor coating, creating a pearlescent finish with dramatic color effect through light interference and light absorption.

POWDER METALLIC COLOUR (135g — 1 per 3 gal kit)	
Item #	Description
PE700248	ColorPigment - P1000 Great White
PE700249	ColorPigment - P1010 Pearl
PE700250	ColorPigment - P1020 Dolphin
PE700251	ColorPigment - P1030 Manatee
PE700252	ColorPigment - P1040 Whale
PE700253	ColorPigment - P1050 Caviar
PE700254	ColorPigment - P1105 Guava
PE700255	ColorPigment - P1110 Overcast
PE700259	ColorPigment - P1130 Lager
PE700263	ColorPigment - P1150 Shipwreck
PE700269	ColorPigment - P1220 Bikini
PE700271	ColorPigment - P1240 Americana
PE700273	ColorPigment - P1310 Mandarin
PE700282	ColorPigment - P1520 Avocado
PE700286	ColorPigment - P1560 Kona
PE700287	ColorPigment - P1610 Caribbean
PE700288	ColorPigment - P1620 Maui
PE700290	ColorPigment - P1640 Azure
PE700291	ColorPigment - P1650 Ocean
PE700292	ColorPigment - P1710 Reef





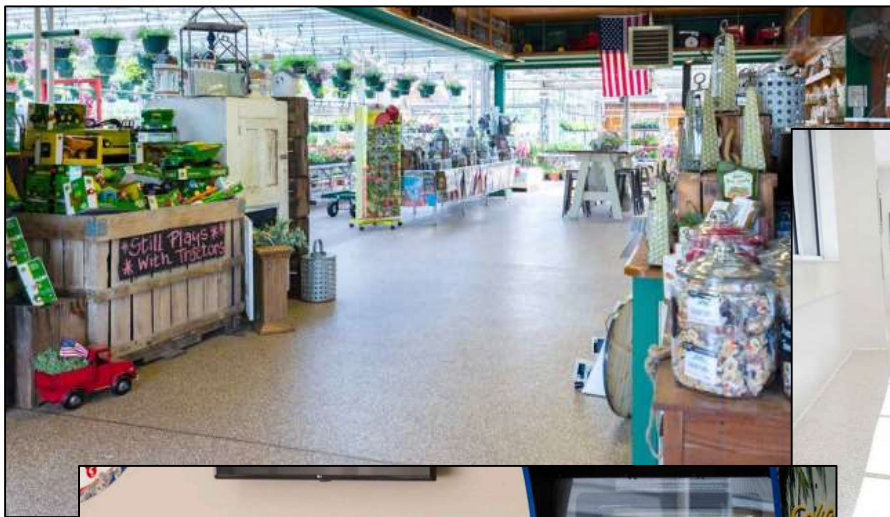
**The colours on this chart are represented as closely as possible. Variations should be expected due to differences in substrate condition, thickness of application, speed of curing, blending of colours, application method, and colour of initial primer coat.



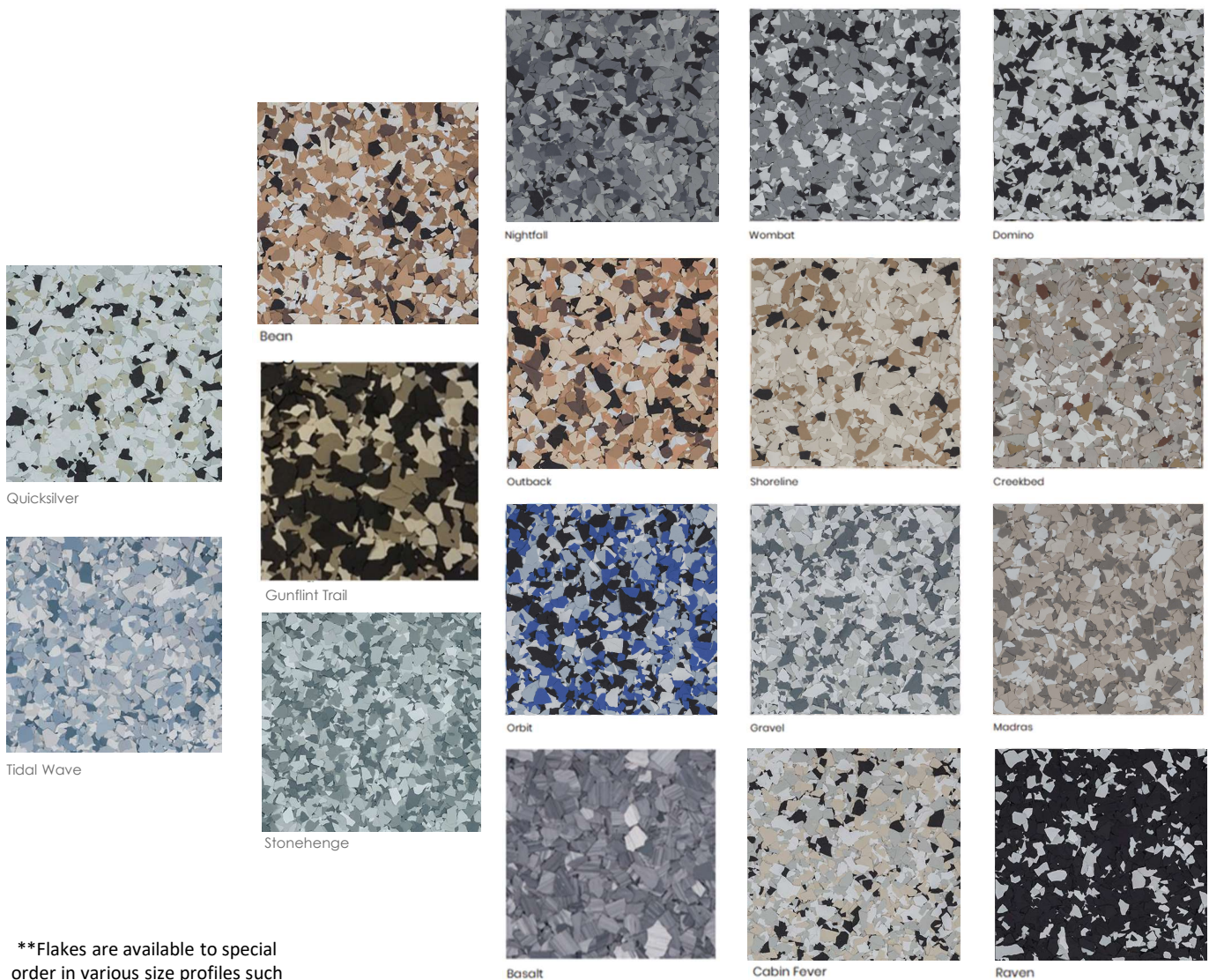
FLAKE Polymer ColorFlakes

Polymer ColorFlakes, also known as decorative vinyl color chips, flakes or fleck are specially formulated paint aggregates used to enhance the aesthetic qualities of seamless, resin-based chip/flake flooring systems. This unique product is random in shape, sized within a standardized range and custom blended to match any décor.

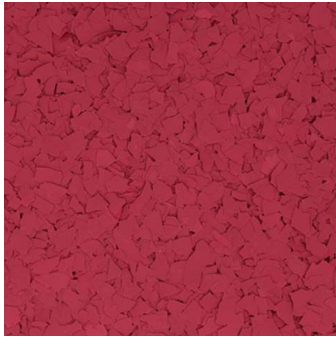
Flakes are continuing to gain popularity amongst architects, designers, contractors and consumers, because of their unique properties that deliver complete customization to commercial, residential and industrial floors with an endless range color-styles, texture, size and blending options.



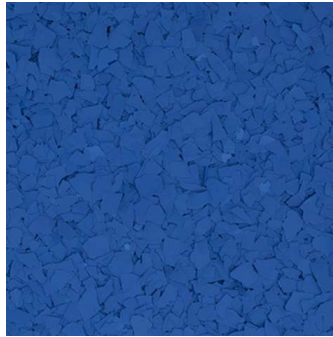
SIGNATURE 1/4" FLAKE BLENDS (40 lb. box)			
Item #	Description	Item #	Description
FLAKE101	Domino	FLAKE111	Creekbed
FLAKE102	Nightfall	FLAKE112	Orbit
FLAKE104	Gunflint Trail	FLAKE113	Madras
FLAKE105	Outback	FLAKE114	Wombat
FLAKE107	Gravel	FLAKE115	Cabin Fever
FLAKE108	Raven	FLAKE116	Bean / Sable
FLAKE109	Shoreline	FLAKE117	Basalt Stone (Marble)
FLAKE110	Stonehenge	FLAKE118	Quicksilver
		FLAKE119	Tidal Wave



**Flakes are available to special order in various size profiles such as 1/8", 1/16", 1/32".



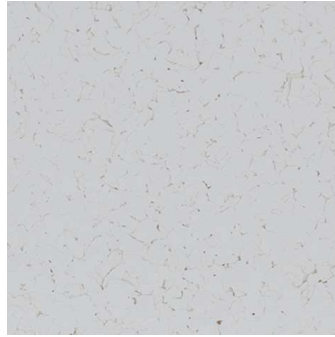
Red



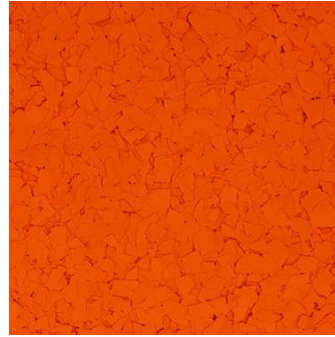
True Blue



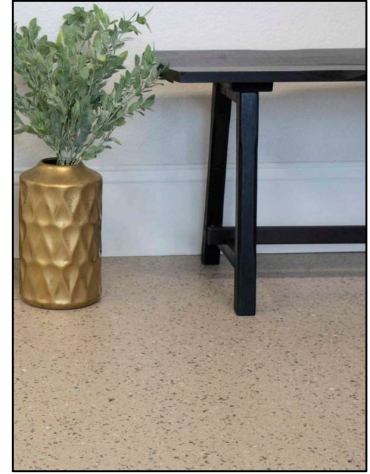
Black



White



Orange



SOLID ¼" COLOUR FLAKE (1.0 lb)	
Item #	Description
FLAKE130	Black
FLAKE131	White
FLAKE132	True Blue
FLAKE133	Red
FLAKE134	Orange





QUARTZ ColorGranules

Redefining toughness with an enhanced focus on combining durability with design and functionality. From the harshest chemical exposure to the most abrasive high-traffic areas, Quartz ColorGranules provide the versatility to custom design a durable high-performance resinous flooring system that will withstand the most severe environments. The sheer hardness of the quartz mineral will enhance both impact and slip resistance, making it the optimal solution for the most extreme surfaces.



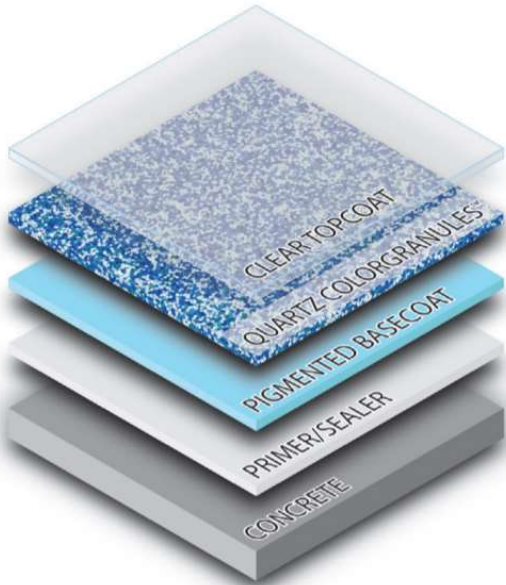
40-S GRADE

Grain Size	40 Mesh
Grain Shape	Spherical
Typical Application	Broadcast



25-A GRADE

Grain Size	25 Mesh
Grain Shape	Angular
Typical Application	Trowel



**All QUARTZ is special order.

MICA Natural MicaFlakes

TORGINOL MicaFlakes make resinous flooring glisten with natural crystalline beauty. These unique metallic flakes are derived from a group of sheet silicate minerals known as mica. These unique flakes provide a natural metallic luster to resinous flooring systems, which cannot be achieved with other engineered materials.



MICA APPLICATION

Floor Application Coverage Rates

Flake Size	Full	Partial
Macro	15-17	25-200 ft/lb
Micro	13-15	25-2500 ft/lb

Disclaimer: Coverage rates vary depending on design preferences and application techniques.



**All MICA and GLITTER is special order.

Polyester GlitterFlakes

Enhance your next flooring project by blending random cut glitter with flakes to accentuate a design. Or use glitter powder to heavily load a clear resin to create a monolithic sparkle surface. Lastly, disperse small amounts of glitter powder into a clear topcoat to create a sparkle effect throughout the surface.



GLITTER FLAKE (0.125" RANDOM-CUT)





SPECIALTY APPLICATION

9100 System DTM Epoxy Mastic Floor Coating

This versatile epoxy coating quickly creates a tough, durable, protective surface. Just one coat of Rust-Oleum High Performance 9100 System DTM Epoxy Mastic is equal to multiple coats of competitive epoxy. Multiple activator options for unique applications.

Self Priming Formula — adheres to a variety of substrates

- Superior long-term resistance to solvents, chemicals, abrasion and impact.
- Convenient 1:1 mixing ratio – no measuring required.

Standard or Immersion Activator Available.



Colours :



**FOR USE ON:

- Steel beams, structural steel and towers
- Concrete floors and conveyors
- Industrial equipment and storage tanks
- Sewage treatment basins
- Non-potable water storage facilities
- Steel handrails

APPLICATION	
SUBSTRATE	
STEEL	RUSTED METAL
CONCRETE	MASONRY
VOC g/l	
VOC <340 9100	VOC <250 V9100

Covers: 125-225 sq. ft./gal.





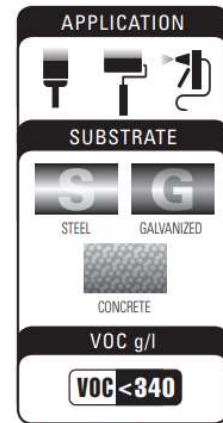
Colours :



**Colour availability varies.

**FOR USE ON:

- Tanks and towers
- Equipment and metal buildings
- Structural steel and rusted surfaces



Covers: 160-280 sq. ft./gal.

9800 System DTM Urethane Mastic Coating

For ultimate protection and long-lasting appearance. This direct-to-metal (DTM) formula fights rust while delivering durable colour retention in aggressive environments. Self-priming — covers in just one coat; two components, high solids high build. Meets USDA requirements for incidental food contact; accepted for use in federally registered Canadian food facilities.

Ideal for tanks, towers, metal equipment, etc. in moderate to severe industrial settings.



INDUSTRIAL COATINGS DTM MASTIC	
Item #	Description
R9101402	9100 DTM Standard Activator – 3.78L
R9102402	9100 DTM Immersion Activator – 3.78L
R91__402	9100 DTM Epoxy Mastic – 3.78L
R-9801501	9800 DTM Activator – 946ml
R-98__419	9800 DTM Urethane Mastic – 3.78L



MicroConcrete

Finitec MicroConcrete is an easy-to-use product designed to cover various surfaces. Whether it is your walls, fireplace mantels, countertops, floors or other surfaces, MicroConcrete is a very resistant product with excellent adhesion.

Key Features:

- Coverage = approx. 10 sq.ft. per 1.0kg.
- Easy to use and simple application using a trowel or taping knife.
- Highly resistant, excellent adhesion.



Protective Sealer

Every MicroConcrete application **MUST** be sealed. That's where the Finitec Sealer comes in. It's a transparent water-based product that is anti-dust. It prevents the crumbling of concrete. It is stain resistant, water repellent and easy to clean and preserves the MicroConcrete colour.



MICROCONCRETE PRODUCTS	
Item #	Description
DF8025_	Protective Sealer 1.0L Bottle
DF8131_	Protective Sealer 3.54L Jug
DFA-21101	Surface Preparation Degreaser – 1.0L Bottle
DFA-501__	MicroConcrete 3.5kg or 18.0kg Package

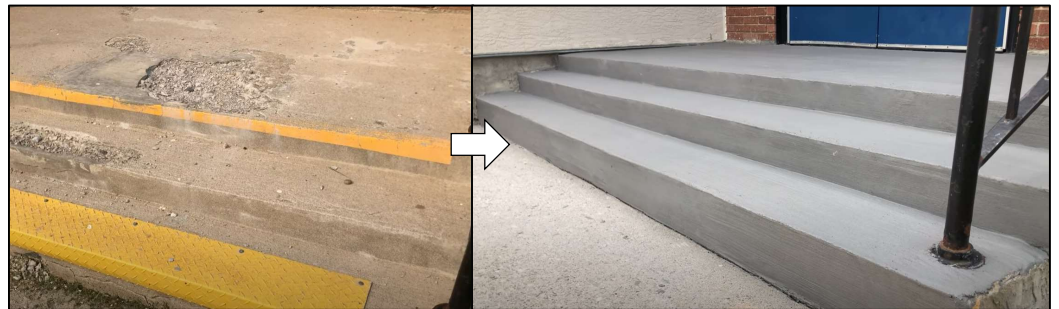


TF Structural FINE

A two-component, interior/exterior concrete overlay and structural repair mortar. Typically installed as a stand-alone overlay for concrete substrates, it provides an economical solution that has excellent abrasion resistance properties and very good durability against mechanical damage. TF Structural Fine is designed for spall repairs, complete concrete resurfacing, or almost anywhere concrete needs repair.



CONCRETE STRUCTURAL REPAIR	
Item #	Description
50021	TF Structural FINE Part A – 50 lb. bag
5002B	TF Structural Part B – 5 Gallon pail
5002B1	TF Structural Part B – 1 Gallon jug



Key Features:

- Fast curing. Return to service in under 30 minutes, if needed.
- Superior bond strength to prepared concrete, can be used in vertical application.
- High early strength gains; can be stronger than concrete in 4 hours.
- Odorless and zero VOC's.
- Excellent long term wear resistance plus economical and easy to apply.
- Working time and cure time can be adjusted with accelerators and retarders.

APPROX. COVERAGE RATES (per bag)	
1/8" Thick	1/4" Thick
55 sq. ft.	30 sq. ft.





TF Flat Finish

A rapid curing, very fine concrete repair slurry, designed for use on shallow surface damage of concrete substrates. TF Flat Finish was created as a rapid repair slurry, for preparation of concrete surfaces, before application of a decorative coating. Applied as a scratch coat to fill in any surface scaling, spalling or imperfections.

With its extremely fast curing properties, TF Flat Finish will be ready for grinding in as little as 45 minutes, allowing the top coating to be applied in the same day.

TF Flat Finish can be applied horizontally, vertically or overhead, and is intended for thicknesses between a feather-edge to approximately 1/4". This product can go thicker but is not designed as a structural material.



Repair for Coatings



CONCRETE OVERLAY	
Item #	Description
5008GLA	TF Flat Finish "A" 40 lbs. Pail
5008GLB	TF Flat Finish "B" 2 Gallon

Key Features:

- Very rapid cure. Ready to grind in under 1 hour
- Odourless and zero VOC's
- Easy to mix, no critical mix ratio between powder and liquid activator
- Superior bond strength to concrete





SOLVENT-BASED CONCRETE SEALER	
Item #	Description
PE700603	10% Solids Sealer 3.78L - Satin Finish
PE700604	20% Sealer 3.78L - Semi-Gloss Finish
PE700605	10% Sealer 18.9L Pail - Satin Finish
PE700606	20% Sealer 18.9L Pail - Semi-Gloss Finish

Solvent-Based Sealer

A product specifically designed to protect cementitious surfaces such as pavers, sidewalks, paths, driveways, garage floors and other masonry surfaces. It enhances the durability and appearance of horizontal coatings for both residential and commercial applications. This self-crosslinking sealer offers excellent resistance to blushing, alkaline, efflorescence and many other chemicals.



Recommended Surfaces

- Driveways and garage floors
- Concrete and sidewalks
- Masonry surfaces
- Paving stones

Advantages

- Dense surface resistant to bacteria and moisture
- Long lasting exposure and weather resistance
- Easy application, fast dry time, wet-on-wet application





TOOLS AND ACCESSORIES



Abrasives for Removal and Grinding

Browse our premium selection of diamonds, segmented blades and other removal grinding accessories. Each offers a fantastic wear rate without taking away from any grinding capabilities. Will provide fast production rates, great floor preparation as well excellent coating removal.

Products will fit most grinders and polishing machines and if you're unsure just ask your sales representative. Whether it's soft, medium, or hard concrete our selection will have you covered ensuring efficient and high-quality work.

REMOVAL, GRINDING AND PROFILING	
Item #	Description
59884001	Husqvarna EZ X2 SS Diamonds
5988832-01	Husqvarna EZ H2 SS Diamonds
5988848-01	Husqvarna EZ XX2 SS Diamonds
2143786C	Hilti Diamond Wheel 6" Coarse
CW07PCD9	7" PCD Disc for Makita
DC514T	5" Diamond Cup Wheel for Makita
E45DR	4 1/2" Double Cup Wheel for Bosch
RHPCD	Rhino PCD's
RMB16H	Rhino 16G Hardbond Diamonds
RM16S	Rhino 16G Soft Diamonds
RSMB-30B	Rhino Shark G30 Medium/Hard





SpeedSqueegee

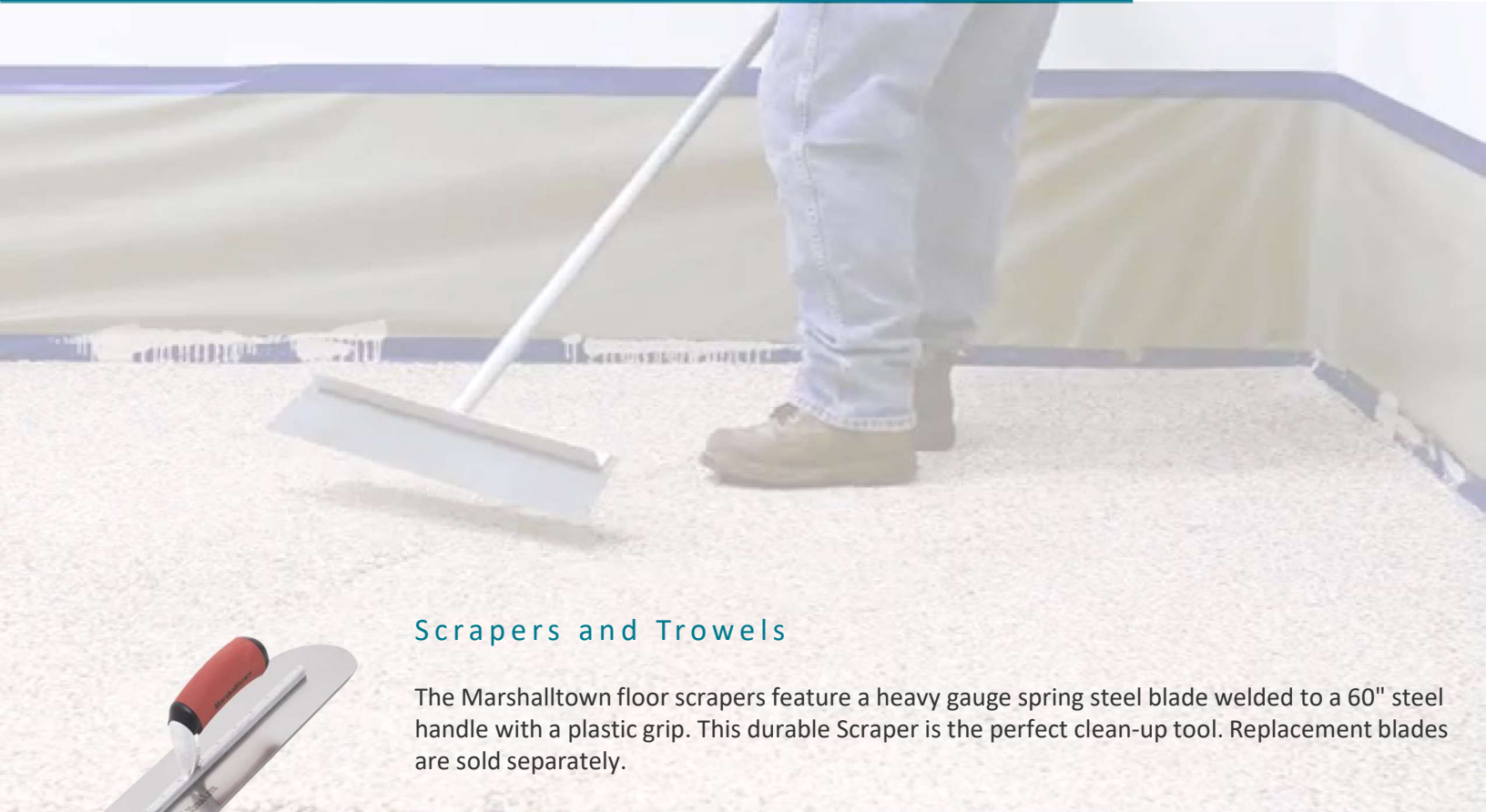
Designed for applying resinous flooring materials such as epoxy and urethanes. Provides industry leading precision, predictability and versatility when compared to competitive products. Unique colour coded identification of WFT (in mils) and WFSR (square/ft). Unique styles of blades (Flat Flex, Flat Stiff, V-Notched) provide the installer with options in the field as to how to best accomplish their project.

SPEEDSQUEEGEE COATING APPLICATORS			
Item #	Description	Item #	Description
MWR47750	18" Flat Stiff	MWR47850	24" Flat Stiff
MWR47756	18" 5-7 WFT Mils	MWR47856	24" 5-7 WFT Mils
MWR47759	18" 8-12 WFT Mils	MWR47859	24" 8-12 WFT Mils
MWR47762	18" 15-20 WFT Mils	MWR47862	24" 15-20 WFT Mils
MWR47765	18" 25-30 WFT Mils	MWR47865	24" 25-30 WFT Mils



-  **FLAT FLEXIBLE**
-  **FLAT STIFF**
-  **5-7 WFT MILS**
WFSR: 230-320 FT² / GAL
-  **8-12 WFT MILS**
WFSR: 133-200 FT² / GAL
-  **15-20 WFT MILS**
WFSR: 80-106 FT² / GAL
-  **25-30 WFT MILS**
WFSR: 53-64 FT² / GAL





Scrapers and Trowels

The Marshalltown floor scrapers feature a heavy gauge spring steel blade welded to a 60" steel handle with a plastic grip. This durable Scraper is the perfect clean-up tool. Replacement blades are sold separately.



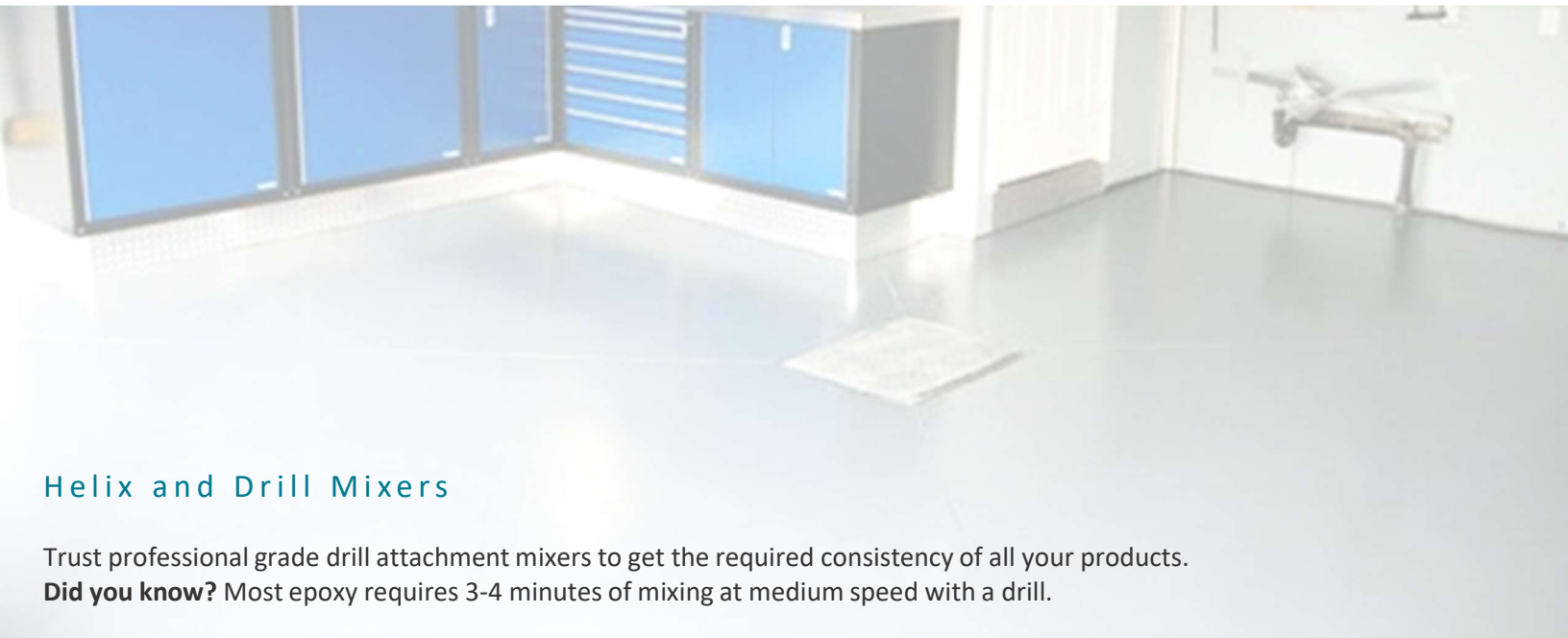
HEAVY GAUGE FLOOR SCRAPERS		PROFESSIONAL TROWELS	
Item #	Description	Item #	Description
MAR820	20 x 4" Floor Scraper	MARMXS66D	Finish Trowel 16 x 4" w/ Durasoft Handle
MAR820B	Replacement Blade for MAR820	MAR4269D	Cove/Base Trowel 6 x 4 3/4"
MAR720	14 x 4" Floor Scraper	MARSP205	Pool Trowel 20 x 5"

** The items listed are only some of what we stock, ask about our complete line of Marshalltown professional tools.

Mixing Measuring Cups

The best for measuring and mixing! Flat bottom and transparent plastic make it easy to read using the accurate measurements. Reusable and a must have for any coating project. Don't forget our large empty pails for mixing full kits quickly and easily with a sturdy carry handle.

MIXING MEASURING CUPS	
Item #	Description
GL916	Small Cup 16.0 Ounce
GL940	Medium Cup 40.0 Ounce
GL980	Large Cup 2.5 Quart
GL9174	X-Large Bucket 5.0 Quart
PE700132	17L Empty Bucket Pail - White



Helix and Drill Mixers

Trust professional grade drill attachment mixers to get the required consistency of all your products.

Did you know? Most epoxy requires 3-4 minutes of mixing at medium speed with a drill.



PAINT MIXERS	
Item #	Description
MWR47431	Helix 1 Gallon or Less
MWR47433	Helix 5 Gallon or Less
RIC55028	Metal 16 x 3.2" for 1-5 Gallons



Brushes and Hand Tools

A. Richard hand tools are practical, durable, designed for ease of use and comfort and environmentally friendly. Their standard of quality is so high you will know you have made the right choice! There's a reason they have been the industry best for so many years. Ask us about other products from their tool line up.



THROW-AWAY BRUSHES AND HAND TOOLS	
Item #	Description
RIC80153	2" / 50mm Chip Brush
RIC80154	3" / 75mm Chip Brush
RICRUBRW12TB	12" Blue Steel Taping Knife Ergo Grip
RICRUB129	Ergo Grip 9-in-1 Combination Tool



PAINT TRAYS AND LINERS	
Item #	Description
NPTR200	2 Litre Plastic Deepwell
NPTL200	Tray Liner for "NPTR200"
NPTR850	Wide 23" Economy Roller Tray
NPTL850	Tray Liner for "NPTR850"

Magic Trowel

The Magic Trowel's patented blade is designed to smooth out and spread all compounds without leaving those annoying trowel lines. This product will help reduce the sanding you would normally have with metal blades. A real time and labor-saving product.

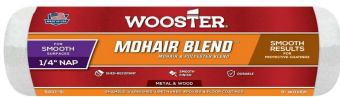


MAGIC TROWELS	
Item #	Description
MWR47417	22" Wide Pro
MWR47418	24" Wide Pro
MWR47419	26" Wide Pro
NPSQTR12	Squeegee Trowel 12"
NPSQTR18	Squeegee Trowel 18"
NPSQTR22	Squeegee Trowel 22"



Roller Sleeve Refills

We pride ourselves in supplying the very best quality roller refills. Pick from the best of the best for all your coating applications from brands such as Nour, Wooster, and Richard.



ROLLER SLEEVE REFILLS	
Item #	Description
NP4UY05-10	Ultra Rol Mini 10mm Refills – 10 Pack
NP9ERP10	9" Epoxyroll Pro 10mm
NP18ERP10	18" Epoxyroll Pro 10mm
NP18ERP15	18" Epoxyroll Pro 15mm
NP18T10	18" Tradition Lint Free 10mm
NP18MF10	18" Microfibre Lint Free 10mm
RIC91817	18" E-Evolution Microfibre
R207-18	18" Mohair Blend 1/4" NAP Smooth
R232	18" Epoxy Glide 1/4" NAP Smooth w/ End Caps
RR642-18	Pro/Doo-Z 18" Shed-Resistant w/ End Caps

Wide Boy Adjustable Frames

Adjusts to hold roller covers 12" to 18" long with 1 1/2" standard or 2 1/4" jumbo diameter.

- Extra-strength steel wing nut design, perfect for floors or other heavy-duty applications
- Rigid tubular steel frame arms, durable fiberglass-reinforced nylon body; weighs less than one pound
- Reinforced threads, Sherlock GT compatible



Pro Frames

Made of glass infused polypropylene making roller extremely easy to clean and lightweight. Solvent resistant, very strong (30% glass), no moving parts, replaceable nylon end cap system, level pressure application.

ROLLER FRAMES AND CAGES	
Item #	Description
NPFR12U	12" Ultra Handle for Mini Rollers
PE700320	Roller Lock Professional Cage Frame
NPFR18Y	18" Pro Frame for Coating Application
NPFREYEC	Replacement End Caps for "Pro Frame"
BR036	Wide Boy Adjustable HD Frame
BR087	End Caps for "Wide Boy"



Extension Poles

Feature fiberglass and aluminum construction with a metal tip. Hex shape for sturdiness and include adjustable pin-lock system.

PROFESSIONAL EXTENSION POLES (fiberglass & aluminum)	
Item #	Description
NPREP1	1 – 2 Feet
NPREP2	2 – 4 Feet
NPREP4	4 – 8 Feet
NPREP6	6 – 12 Feet





Shoe-In PRO Spike Shoes

It's never been easier to install epoxy coatings or self-leveling and decorative overlays. Hands free! Put an end to frustrations with straps, buckles and adjustments on traditional floor finishing shoes. Goes over your existing shoes or boots. Stays snug whether you're standing or kneeling.

SLIP-ON SHOE IN PREMIUM SPIKE SHOES	
Item #	Description
MWR46170	Professional Spikes - Adult Small
MWR46171	Professional Spikes - Adult Medium
MWR46172	Professional Spikes - Adult Large
MWR46173	Professional Spikes - Adult X-Large



Spiked Gunite Shoes

Economy style step on features 13 spikes per shoe with plastic strap clips for simple adjustment. Solvent resistant and pre-assembled, one size fits all.



BUCKLE STRAP ECONOMY SPIKE SHOES	
Item #	Description
NPSQSHOES	Economy Strap-On Spiked Gunite Shoes

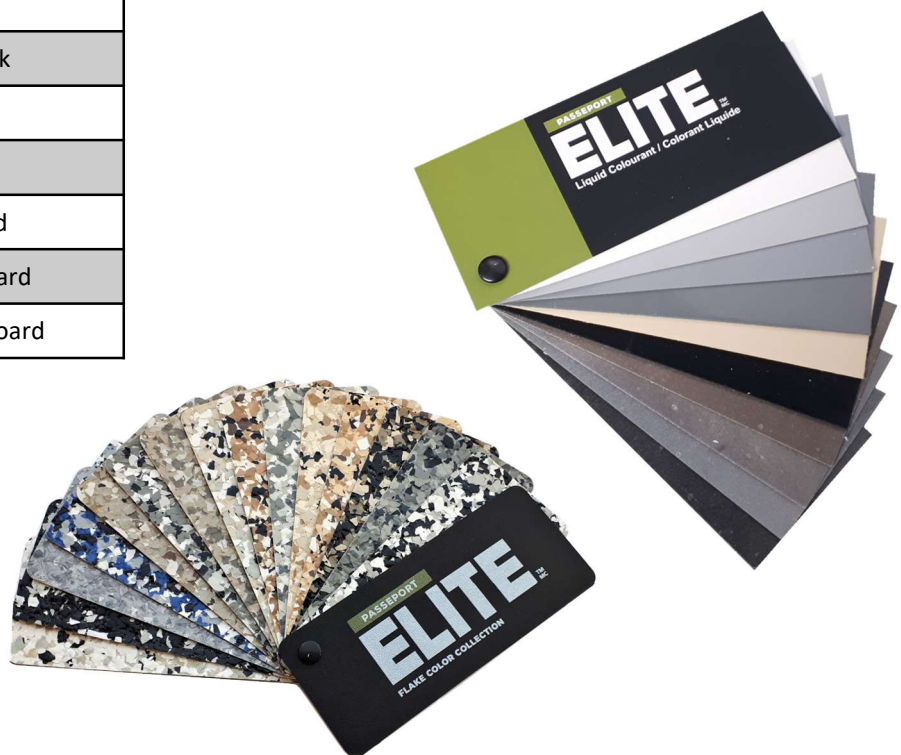


Sample Colour Fan Decks, Display Boards Plus More!

Complete your order with any of our handy portable professional sample fan decks. Available to purchase to show your customer the real deal, some even include a rear pocket to display your business card!

SPECIALTY MARKETING MATERIALS

Item #	Description
FLAKE998	Stocking FLAKE Blends Fan Deck
FLAKE997	FLAKE Swatch Book
FLAKE995	FLAKE Extra Large Physical Sample Kit Box
FLAKE993	Hybrid Flake Terrazzo Fan Deck
FLAKE992	QUARTZ Blends Fan Deck
FLAKE991	QUARTZ Physical Sample Kit Box
FLAKE989	QUARTZ Signature Bi-Fold Brochure
FLAKE988	Metallic Powder Pigment Colour Fan Deck
FLAKE987	MICA Blends Fan Deck
FLAKE985	GLITTER Flake Blends Fan Deck
FLAKE984	Passeport Elite FLAKE Large Display Board
FLAKE983	Passeport Elite QUARTZ Large Display Board
FLAKE982	Passeport Elite PIGMENT Large Display Board





SYSTEMS LITERATURE



①

Solid Epoxy Coating Page 31

100% solid, two component epoxy coating with monochrome colour, opaque and glossy finish used to restore deteriorated floors or protect new floors.



②

Epoxy FLAKE System 32

Epoxy coating with vinyl flake broadcast system that is extremely durable with good abrasion resistance. Designed for pedestrian and vehicle traffic.



③

Metallic Epoxy Coating 33

Metallic epoxy coating with a glossy finish offering the same physical and chemical properties as the ECTR product range.



④

One-Day Garage Polyaspartic 34

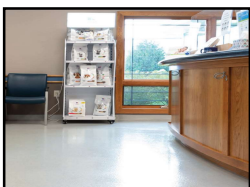
Polyaspartic polyurea with coloured vinyl flake designed for one day application. UV stable and superior chemical resistance, extremely durable.



⑤

Deck Coatings 35

Seamless, impermeable membrane coating system, which was specifically designed to protect substrates against water infiltration.



⑥

QUARTZ Broadcast 36

Epoxy and aggregate broadcast anti-slip system designed to protect new or deteriorated floors.

PRIMARY APPLICATIONS

Have a project and not sure which system to use? You've come to the right place! The list below includes popular spaces where coatings are used – the numbers beside them cross reference with the systems on page 42 to your left.

Aircraft Hangers ① ② ④

Lunchrooms ① ② ③ ④

Areas of High Traffic Circulation ① ② ④

Mechanical Rooms ① ② ④ ⑤ ⑥

Areas of Light Manufacturing ① ② ④

Medical Clinics ① ② ④ ③ ⑥

Assembly Areas ① ② ④

Offices ① ② ④ ③

Automotive Shops / Garages ① ② ④

Pharmaceutical Production Areas ① ⑥

Balcony Terraces ⑤ ⑥

Pool Patios ④ ⑥

Boutiques ① ② ③ ④

Production Lines ① ② ④

Classrooms ① ② ③

Refineries ①

Clean Rooms ① ⑥

Residential Garages ① ② ③ ④

Commercial Reception Areas ① ② ③ ④

Restaurants ① ② ③ ④

Commercial Store Front ① ② ③ ④

Salons ① ② ③ ④

Exterior Balconies ⑤

Showers ① ② ④

Interior Parking Deck ⑤

Showrooms ① ② ③ ④

Laboratories ①

Stadiums ① ② ③ ④ ⑥

Light to Heavy Manufacturing ① ④ ⑥

Warehouses ① ② ④

1. Solid Epoxy Coating System

A 100% solid, two component epoxy coating. With its monochrome color, opaque, glossy finish, seamless, and a high coverage power, this system is used to restore deteriorated floors or protect new floors. ECTR provides excellent resistance to abrasion and chemical resistance. The system meets many requirements such as durability, performance as well as aesthetics. Seamless plinths are optional with ECTR COVE. This seamless coating offers an unlimited choice of color, and a smooth or non-slip finish can be achieved using very fine to very aggressive aggregates. This system has been approved by the Canadian Food Inspection Agency (CFIA) and meets LEED standards.

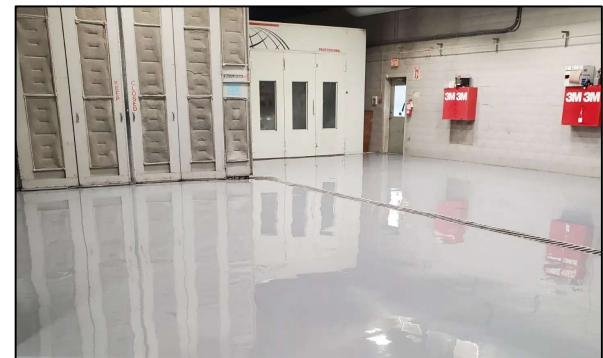
Primary Areas Of Use

- Aircraft Hangers, Assembly Areas, Areas of Light Manufacturing
- Boutiques, Classrooms, Clean Rooms, Auto Shops
- Laboratories, Offices, Showrooms



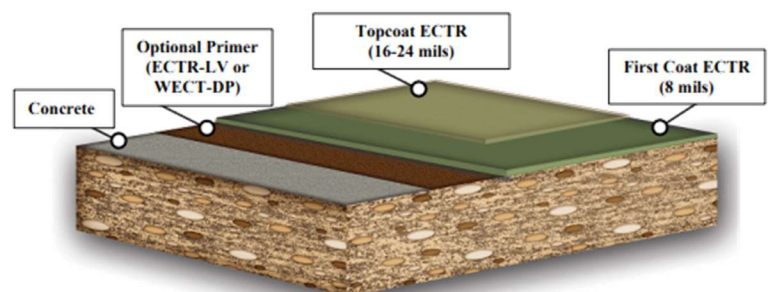
ADVANTAGES

- Contains very low VOC content, interior applications without odors
- Impermeable and seamless
- Seamless coves can be shaped using ECTR-COVE
- Dense surface resistant to bacteria and moisture and easy to clean
- Excellent adhesive properties
- May apply several layers on itself with excellent adhesion



Application

- ECTR – 8 mils (200 sq/ft per gallon)
- ECTR – 16 mils (100 sq/ft per gallon)
- Optional Topcoat
- Optional Cove

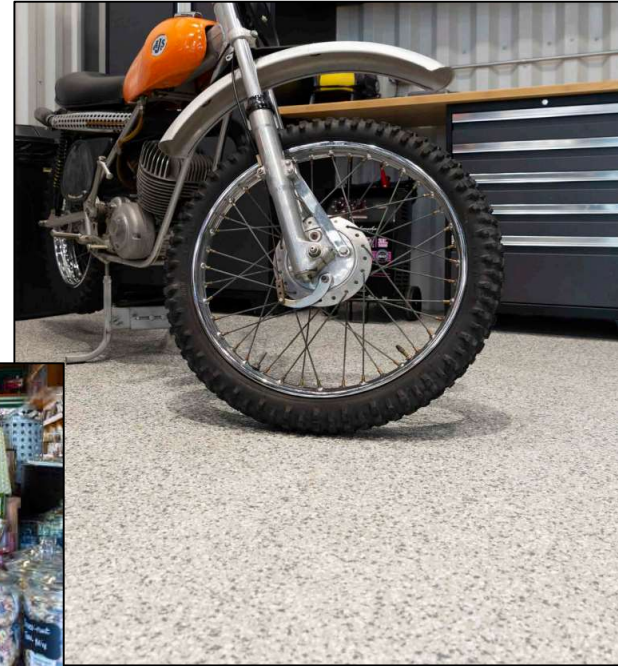


2. Epoxy FLAKE System

A 100% solid, two component epoxy coating with vinyl flake broadcast system. It is extremely durable with good abrasion resistance. Easy to clean, provides traction and looks fantastic in so many colours and styles to choose from! This system has been designed for pedestrian and vehicular traffic.

Primary Areas Of Use

- Aircraft Hangers, Exterior Balconies
- Locker Rooms and Showers, Printing Shops
- Production Lines, Residential & Commercial Garages
- Stadiums, Warehouses

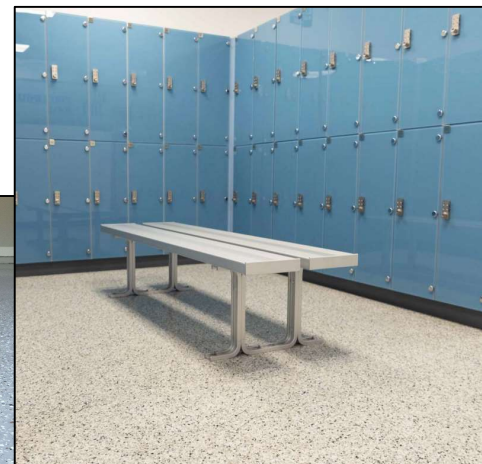


ADVANTAGES

- Contains with a very low VOC content, allowing for interior applications without harmful odors
- Ideal for fixing or reinforcing floors
- Seamless coves can be shaped using ECTR-COVE
- Dense surface resistant to bacteria and moisture and easy to clean
- Excellent adhesive properties, allowing for application on a wide variety of substrates

Application

- ECTR – 12 mils (150 sq/ft per gallon)
- FLAKE Broadcast – (300 sq/ft per 40 lbs.)
- ECTR – 14-16 mils (100-120 sq/ft per gallon)
- Optional Cove
- Optional Topcoat



3. Metallic Epoxy Coating

A 100% solid, two component epoxy coating with a metallic and glossy finish. ECTR-MT offers the same physical and chemical properties as the ECTR product range with an exceptional look, and a seamless, easy to clean finish. This system meets many requirements such as durability, performance as well as aesthetics. This seamless coating offers a wide range of metallic colors for any aesthetic. This system has been approved by the Canadian Food Inspection Agency (CFIA) and meets LEED standards.

Primary Areas Of Use

- Restaurants, Assembly Areas, Areas of Light Manufacturing
- Boutiques, Classrooms, Clean Rooms, Garages, Salons
- Laboratories, Offices, Showrooms, Walkways

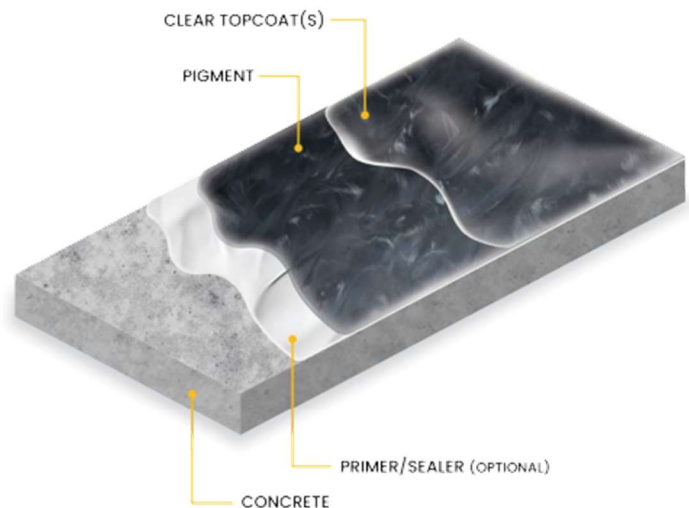


ADVANTAGES

- Contains with a very low VOC content, allowing for interior applications without harmful odors
- Impermeable and seamless
- Seamless coves can be shaped using ECTR-COVE
- Dense surface resistant to bacteria and moisture and easy to clean
- Excellent adhesive properties, allowing for application on a wide variety of substrates
- May apply several layers on itself with excellent adhesion

Application

- ECTR – 8 mils (200 sq/ft per gallon)
- ECTR – 32 mils (50 sq/ft per gallon)
- Optional Topcoat



4. One-Day Garage System

A two-component, polyurea polyaspartic product with colored vinyl flake coating designed for one day application. It is extremely durable with a good abrasion resistance. This system has been designed for pedestrian and vehicular traffic.

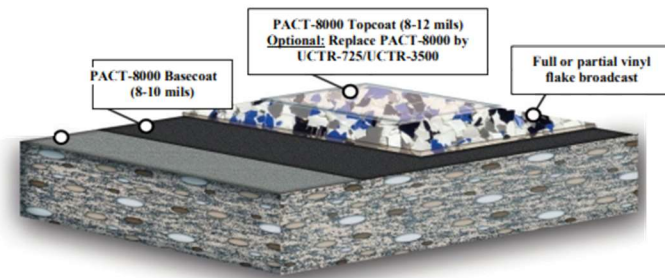
Primary Areas Of Use

- Residential and Commercial Garages
- Production Lines, Printing Shops
- Offices, Stadiums, Lunchrooms



ADVANTAGES

- **Projects can be completed in one day**
- **Fast return to service**
- Ideal to fix and reinforce concrete surfaces
- Impermeable and seamless
- Dense surface resistant to bacteria and moisture and easy to clean
- Excellent adhesive properties and colour coverage over concrete



Application

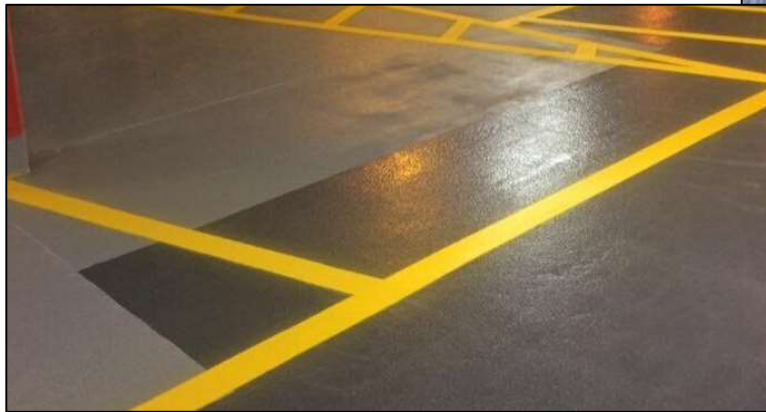
- PACT-8000 – 8 mils (200 sq/ft per gallon)
- FLAKE Broadcast – (300 sq/ft per 40 lbs.)
- PACT-8000 – 12-16 mils (100-150 sq/ft per gallon)
- Optional Cove

5. Deck Coating System

A 100% solid, two component, epoxy-polyurethane membrane coating system. ECTM-DECK is a seamless impermeable membrane coating system, which was specifically designed to protect substrates against water infiltration. This membrane exhibits high elongation and a high resistance to tearing.

Primary Areas Of Use

- Balcony Terraces
- Interior Parking Deck
- Mechanical Rooms

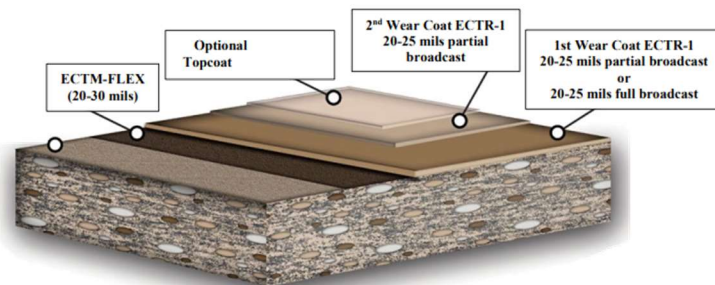
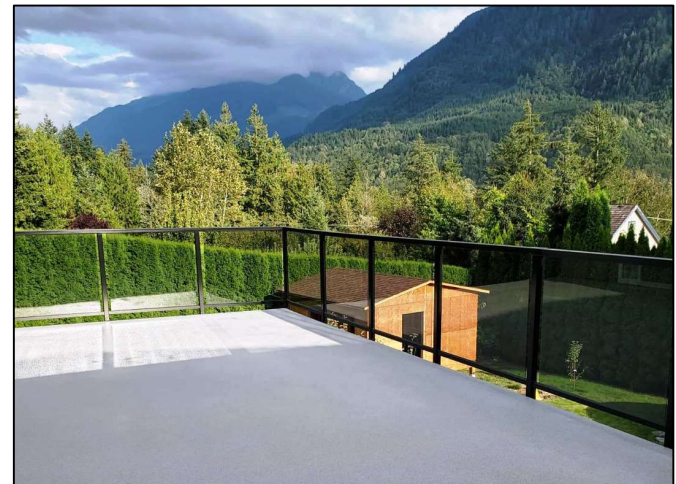


ADVANTAGES

- Contains no solvent with a very low VOC content
- Impermeable and seamless
- Superior flexibility
- Excellent adhesive properties
- May apply several layers on itself with excellent adhesion

Application

- ECTM – 20-30 Mils (53-80 sq/ft per gallon)
- ECTR-3 – 16 mils (100 sq/ft per gallon)
- Partial or Full Broadcast
- ECTR-3 – 14-20 mils (80-120 sq/ft per gallon)
- Optional Topcoat



6. QUARTZ Broadcast System

Quartz broadcast anti-slip system, applied at thicknesses between 1.5mm-3mm (1/16in-1/8in) and designed to protect new or deteriorated floors. ECTR-QBR provides excellent resistance against compression, abrasion, impacts and chemicals. ECTR-QBR meets many requirements such as durability, performance as well as aesthetics. Seamless plinths are optional with ECTR COVE. This seamless coating offers an unlimited choice of color, and a smooth or non-slip finish can be achieved using very fine to very aggressive aggregates. This system has been approved by the Canadian Food Inspection Agency (CFIA).

Primary Areas Of Use

- Pharmaceutical Production Areas
- Assembly Areas, Classrooms, Medical Clinics
- Refineries, Laboratories, Light to Heavy Manufacturing
- Areas of High Traffic Circulation
- Food Production
- Pool Surrounds

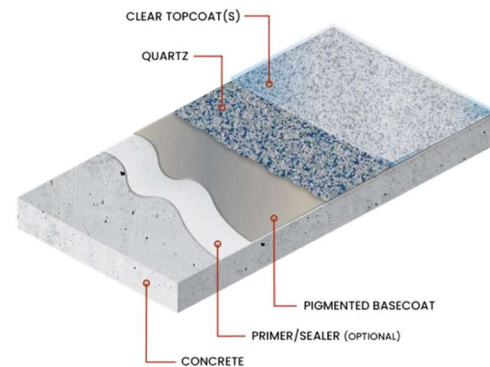


ADVANTAGES

- Contains 100% solids, allowing for interior applications without harmful odors
- Ideal for reinforcing concrete surfaces
- Provides a durable, anti-slip finish
- Dense surface resistant to bacteria and moisture and easy to clean
- Excellent adhesive properties, allowing for application on a wide variety of substrates
- May apply several layers on itself with excellent adhesion

Application

- ❑ ECTR – 12 Mils (150 sq/ft per gallon)
- ❑ Quartz – 0.5lb (1 sq/ft per pound first broadcast)
- ❑ ECTR – 20 Mils (80 sq/ft per gallon)
- ❑ Quartz – 0.5lb (1 sq/ft per pound second broadcast)
- ❑ PACT 8000 – 14-16 sq/ft (100-120 sq/ft per gallon)
- ❑ Optional Topcoat



THANK YOU!

We appreciate your business and look forward to serving you as your product solutions providers.

CATALOG ORDERS

To place an order:

E-mail: sales@concretecoatingsplus.ca
Call: (604) 474-5550
7:30 AM - 4:00 PM Pacific Standard Time
Monday through Friday (except holidays)

Concrete Coatings Plus
Unit #4 – 85 Glacier Street
Coquitlam, BC V3K 5Z1

Sales Tax and Eco Fees

Appropriate sales tax and eco fees will be added to orders depending on province.

