

TERRAFUSE | TF STRUCTURAL

Designed as a rapid curing repair for use on damaged concrete structures, TF Structural provides a simple solution, with very good long-term durability.

Available at:



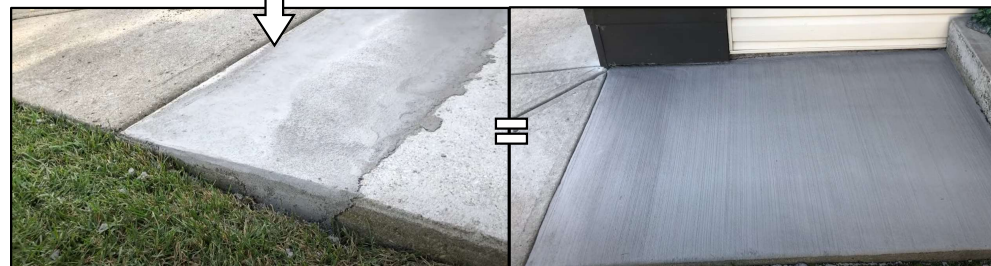
FASTEST RETURN TO SERVICE



Ready to coat in 2 hours!



Perfect for Stairs



CONCRETE COATINGS PLUS

Unit 4 – 85 Glacier Street
Coquitlam BC V3K 5Z1
C: (778) 840-7204 O: (604) 942-1035
✉ andrew@distdfm.com

TF Structural is a two-component, matte finish, interior/exterior concrete coating and structural repair mortar. It provides an economical solution that has excellent abrasion resistance properties and very good durability against mechanical damage.

Areas Of Use

- Garages, parkades, warehouses, loading docks, structural columns, rebuilds, or anywhere damaged concrete needs repair!

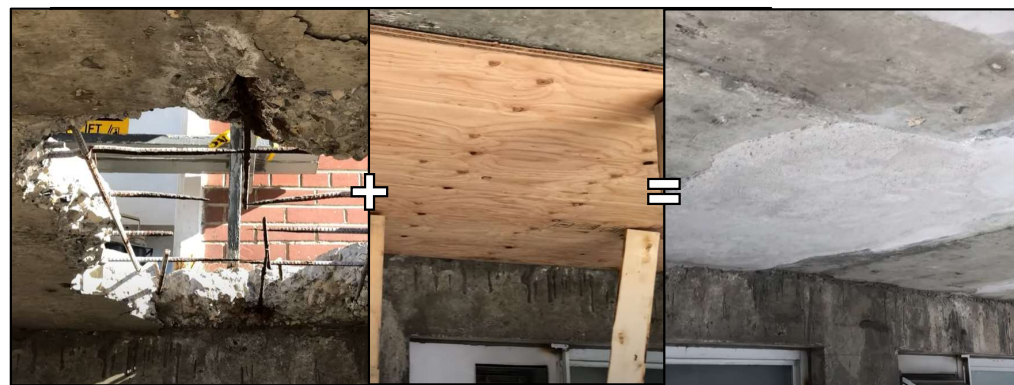
Key Advantages

- 1500 psi (10.4 MPA) in 4 hours
- 6116 psi (42.2 MPA) fully cured
- Economical and easy to apply
- Superior bond strength to concrete
- Stand-alone overlay
- Super bond strength to concrete
- Can be sealed
- Variable mix ratios
- Foot traffic in as little as 30 minutes
- Excellent long-term wear resistance
- Subzero application (TF Heat)
- Vertical applications
- Stronger than concrete in 2 hours
- Coat over top of in as little as 2 hours
- Can be used where concrete cannot be used
- Odorless and zero VOC
- No maximum or minimum install thickness

APPROX. COVERAGE RATES (per bag)	
1/8" Thick	1/4" Thick
30 sq. ft.	55 sq. ft.



Concrete Repair



Repair for Coatings

